

WORKSPACE CONFERENCE

THE NEXT NORMAL

SPONSORS



THANK YOU TO OUR 2021 SPONSORS





20/20 VISUAL MEDIA

20/20 Visual Media is a video production company made up of passionate storytellers. We have created meaningful, effective video messaging delivered across every digital platform.

We've documented stories around the country and the world, all while staying true to our core belief: that everyone has a story to share. From the largest consumer brands to the smallest non-profits, the approach we take with each client is the same:

Guaranteed personal attention from a team dedicated to telling a story that is entirely your own.



APPIAN

Appian helps organizations build apps and workflows rapidly, with a low-code automation platform. Combining people, technologies, and data in a single workflow, Appian can help companies maximize their resources and improve business results. Many of the world's largest organizations use Appian applications to improve customer experience, achieve operational excellence, and simplify global risk management and compliance. For more information, visit www.appian.com.

Ballard Spahr_{LLP}

BALLARD SPAHR LLP

Ballard Spahr LLP, a national firm with more than 650 attorneys in 15 offices in the United States, provides a range of services in business and transactions, intellectual property, litigation, finance, and real estate. Our clients span start-ups to Fortune 500 companies in the life sciences, technology and healthcare industries. We also represent financial institutions, investors and developers, government agencies and sponsored enterprises, educational institutions, and nonprofit organizations. The firm combines a national scope of practice with strong regional market knowledge.

BOOKMINDERS®

BOOKMINDERS

Bookminders provides timely, accurate and cost-effective bookkeeping for nonprofit organizations and small businesses. Ninety percent of our clients receive a weekly service that is a complete solution for maintaining our clients' accounting systems, for much less than hiring internal staff. Our weekly service allows for implementation of complex tracking and reporting systems with minimized time requirements by our clients. Bookminders not only provides degreed accountants to our clients; we set up and maintain our clients secure, cloud-based financial system and insure high quality of services are delivered by having an internal review team.



BUCHANAN INGERSOLL & ROONEY

Buchanan Ingersoll & Rooney is a national law firm with a proven reputation for providing progressive, industry-leading legal, business, regulatory and government relations advice to our regional, national and international clients. Our 450 attorneys and government relations professionals across 15 offices represent some of the highest profile companies in the nation. While we service a wide range of clients, Buchanan has especially deep experience in the life sciences, healthcare, finance and energy industries.

Life Sciences

Our unique team of legal experts and government relations professionals offer a rare mix of comprehensive services helping life sciences companies develop, defend and extend the pharma product lifecycle at every step of the process.

Labor & Employment

With more than 60 practice-specific lawyers, our labor and employment team is one of the largest and most respected within full-service law firms. We provide assistance on every aspect of labor, employment, employee benefits and immigration.



CORPORATE TRAVELER

Corporate Traveler provides a unique blend of expert travel management service and technology to over 1,400 small- to medium-sized businesses and 50,000 travelers nationwide. With 46 teams across 20 U.S. locations, Corporate Traveler is dedicated to making corporate travel simpler, faster, and easier. A part of Australia-based Flight Centre Travel Group (ASX: FLT), the company is globally connected, but locally focused. Its technology and people deliver custom solutions that help businesses succeed.



ERNST & YOUNG

EY is a global leader in assurance, tax, consulting, strategy and transaction services. EY's Global Life Sciences Sector brings together a worldwide network of 17,000 sector-focused professionals to anticipate trends, identify their implications and help clients create competitive advantage. Whether it's audit services, managing risk, improving transparency, replacing and developing systems or enhancing data quality, EY's Life Sciences team is committed to helping organizations reach their full potential.

EY refers to the global organization, and may refer to one or more, of the member firms of Ernst & Young Global Limited, each of which is a separate legal entity. Ernst & Young Global Limited, a UK company limited by guarantee, does not provide services to clients. Information about how EY collects and uses personal data and a description of the rights individuals have under data protection legislation is available via ey.com/privacy. For more information about our organization, please visit ey.com.



THERMO FISHER SCIENTIFIC INC.

Thermo Fisher Scientific Inc. (NYSE: TMO) is the world leader in serving science, with annual revenue exceeding \$30 billion. Our Mission is to enable our customers to make the world healthier, cleaner and safer. Whether our customers are accelerating life sciences research, solving complex analytical challenges, improving patient diagnostics and therapies or increasing productivity in their laboratories, we are here to support them. Our global team of more than 80,000 colleagues delivers an unrivaled combination of innovative technologies, purchasing convenience and pharmaceutical services through our industry-leading brands, including Thermo Scientific, Applied Biosystems, Invitrogen, Fisher Scientific, Unity Lab Services and Patheon. For more information, please visit www.thermofisher.com.



GLOBAL TAX MANAGEMENT

Global Tax Management (GTM) is a corporate tax services firm dedicated to helping mid-size and large multinational corporations address complex tax operations. GTM takes operational tax burdens off tax and finance leaders, providing high level tax expertise at value driven rates without any independence issues, where and when needed. For over 25 years, GTM has provided the expertise to build, operate, and manage tax functions for its clients. Core services include tax provision, compliance, international tax, indirect tax, technology automation, and tax consulting and planning services. GTM is a U.S. alliance partner of WTS Global. For more information, visit www.gtmtax.com.



JLL

JLL is a leading Fortune 500 professional services firm that specializes in real estate and investment management. JLL offers industry-leading market intelligence to clients to develop real estate solutions that help drive business performance. The dynamic Greater Philadelphia life sciences market and rapid growth of cell & gene therapy companies has led to increased competition for space with limited existing supply, making real estate decisions more important than ever. JLL has an extensive track record of partnering with Life Sciences clients, both large and small, to deliver successful real estate solutions. Our vision is to reimagine the world of real estate, creating rewarding opportunities and amazing spaces where people can achieve their ambitions. In doing so, we will build a better tomorrow for our clients, our people and our communities.

NEWMARK

NEWMARK

At Newmark, we don't just adapt to what our partners need—we adapt to what the future demands. Since 1929, we've faced forward, predicting change and pioneering ideas. Almost a century later, the same strategic sense and audacious thinking still guide our approach. Today our integrated platform delivers seamlessly connected services tailored to every type of client, from owners to occupiers, investors to founders, and growing startups to leading companies.

Tapping into smart tech and smarter people, Newmark brings ingenuity to every exchange and transparency to every relationship. We think outside of boxes, buildings and business lines, delivering a global perspective and a nimble approach. From reimagining spaces to engineering solutions, we have the vision to see what's next and the tenacity to get there first.



PHARMADIRECTIONS

PharmaDirections is a consulting and project management company with a unique approach to managing preclinical, CMC and regulatory affairs programs. We provide strategic planning then oversee and direct pharmaceutical contract research using our own scientific experts and project managers. We are a comprehensive R&D resource for pharmaceutical and biotech companies who need more than just outsourcing of their API or drug product development..



SINO BIOLOGICAL

Sino Biological is an internationally recognized supplier for recombinant antigens and antibodies. Over the years, the company has developed a large selection of reagents in Oncology and infectious disease research. These antigens and antibodies have been used to support therapeutic antibody, immunodiagnostic, and vaccine development work. Since the start of the COVID19 pandemic, our SAS-COV-2 reagents have been used to manufacture multiple FDA-approved COVID19 testing kits. The company's portfolio also features the world largest bank of viral antigens, the ProVir™ collection. For more information, please visit www.sinobiological.com.



STEPHANO SLACK

Stephano Slack LLC was founded by partners Michael Stephano and Blake Chapman in 2004, and has since become a reputable name in the region as a mid-sized accounting firm serving clients across the country and overseas. At Stephano Slack, we pride ourselves on accessibility, reliability, and accountability. We work to help our clients solve problems and gain clear financial insight into their business. Over time, we expanded our services beyond our core tax and attest offerings to become a trusted outsourced back office support to our clients in addition to accounting services. Our niches are life science startups and grant funding, professional service businesses, and more. Grant funding is a specialized niche that not many accountants deal with, but we run to it and take pride in working with these startups. For more information visit www.stephanoslack.com and www.stephanoplus.com

THE O'CONNOR GROUP

TALENT ACQUISITION & HR CONSULTING

THE O'CONNOR GROUP

The O'Connor Group provides flexible outsourced Human Resource and Talent Acquisition solutions to small and mid-market life sciences, professional services, and manufacturing industries. Our dedicated and industry-specialized experts work as an integrated part of our client's teams to help them attract, retain, and engage the best employees while building the solid Human Capital infrastructure needed to thrive.

We partner closely with our clients to understand their culture, goals, and challenges. This discovery process allows our experts to develop and execute a clearly articulated vision and plan that is aligned with our clients' needs. Our unique model of partnering with our clients on an hourly basis has proven efficiency and client budget control, leading to a 90% CEO business referral rate.

Our goal is to provide insightful, creative, and innovative human capital solutions that allow our clients to focus on the success of their organizations. While we work closely with owners, executives, and human resources leaders to help create, and improve our client's human capital management function, The O'Connor Group also provides short-and long-term resources that fill critical gaps on our client's teams. Regardless of the engagement, we are committed to providing clients with optimal solutions and a simple, transparent process.

The O'Connor Group (TOC) has 48 talented Human Resource and Talent Acquisition Partners and was founded in 2007 by Marcia O'Connor. We are based in King of Prussia, PA and are recipients of the Philadelphia Business Journal's Best Places to Work, Soaring 76, Healthiest Employer awards along with making the Inc.5000 and Philadelphia100 lists in 2020.



TROUTMAN PEPPER

Troutman Pepper is a national law firm known for its higher commitment to client care. With more than 1,200 attorneys in 23 U.S. cities, the firm partners with clients across every industry sector to help them achieve their business goals.

Health sciences is a core practice at Troutman Pepper. From the discovery of breakthrough therapies to improving the delivery of patient care, our team supports our clients' business goals while guiding them through the unique and ever-changing complexities of the industry. Our team represents clients such as innovative biotech, pharmaceutical and medical device developers and manufacturers; physicians, hospitals and other health care providers; health insurers and other payors; and a wide range of members of the health care supply chain. Our attorneys regularly assist clients with the development and protection of new life-saving therapies, structuring and completing transformative business combinations and alliances, compliance with ever-shifting government regulations and enforcement actions, and defeating several of the largest and most complex litigation threats faced by a health care entity.



UNIVEST

Univest Financial Corporation is a vital, growing company with deep ties to its local communities. Our rich history is enhanced by our desire to remain close to our customers, so we can deliver excellent service and solutions to meet their financial needs. Univest's financial solutions for your life and business include banking, insurance, investments, trust, wealth management, leasing, and mortgage banking. Univest Financial Corporation (UVSP), including its wholly-owned subsidiary Univest Bank and Trust Co., Member FDIC, has approximately \$6.3 billion in assets and \$4.1 billion in assets under management and supervision through its Wealth Management lines of business at December 31, 2020 Headquartered in Souderton, Pa. and founded in 1876, the Corporation and its subsidiaries provide a full range of financial solutions for individuals, businesses, municipalities and nonprofit organizations in the Mid-Atlantic Region. Univest delivers these services through a network of more than 50 offices in southeastern and central Pennsylvania as well as New Jersey and online at www.univest.net.



WOODRUFF
SAWYER

WOODRUFF SAWYER

As one of the largest insurance brokerage and consulting firms in the US, Woodruff Sawyer protects the people and assets of more than 4,000 companies. We provide expert counsel and fierce advocacy to protect clients against their most critical risks in property & casualty, management liability, cyber liability, employee benefits, and personal wealth management. We provide expertise and customized solutions where clients need it, with headquarters in San Francisco, offices throughout the US, and global reach on six continents.



*Building
community
together*

At Univest, we firmly believe in giving back to the local communities we serve. For more than 140 years, it's been our way of making a difference each day, through helping to improve the quality of life for our friends and neighbors. Because local values are as important to us as they are to you.



univest.net



877.723.5571



COMMITTED TO LOCAL

 **UNIVEST[®]**
BANKING | INSURANCE | INVESTMENTS
Member FDIC



*Achieve
Ambitions*

Achieving ambitions and fueling scientific innovation through real estate.

As the region's leading commercial real estate firm, JLL has the full-service platform to advise on all real estate needs, from optimizing space efficiencies to maximizing R&D returns for life sciences companies — and everything in between.

Join us in shaping the future of real estate for a better world.

- Leasing
- Tenant Representation
- Retail
- Capital Markets, Sales & Financing
- Project & Development Services
- Property & Facility Management
- Integrated Portfolio Services
- Consulting
- Research
- Marketing

Commercial Real Estate Advisors



Jones Lang LaSalle Brokerage, Inc.

1650 Arch Street, Suite 2500

Philadelphia, PA 19103

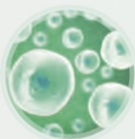
+1 215 988 5500

jll.com/philadelphia

  @JLL_USA

Global Leader in Recombinant Technology

- Recombinant Proteins from Human Cells
- Unique Collection of 6,000+ mAbs
- All Made in House



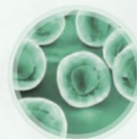
HEK293/CHO transient expression service



Baculovirus-insect expression service



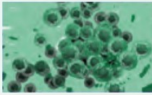
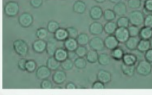

***E.coli* expression service**



CHO/HEK293 stable cell line development

Customized Recombinant Production Service

☐ Protein Production

Expression System	Time Line	Notes	Examples
 Mammalian	6-8 weeks	<ul style="list-style-type: none"> High density cell culture High expression level Specially optimized vectors A collection of proprietary lead sequences and linkers Secreted proteins and ECD 	IL2 CLEC12A EGFRVIII DLL4 DKK1
 Insect	8-10 weeks	<ul style="list-style-type: none"> High success rate Usually used for large proteins and intracellular proteins Glycosylation Sf9 cells and High-five cells available 	Influenza HA NKG2D CD39 AG02
 <i>E.coli</i>	6-8 weeks	<ul style="list-style-type: none"> Rapid Most cost-effective Extensive experience in purification from the inclusion body Endotoxin ctrl available upon request 	IL18 IL7 IL1-Beta PFLDH

☐ Antibody Production Transient Expression in HEK293 and CHO Cells

Expression System	Time Line	Notes
SinoExpress HTP mAb expression service (mAb only)	3 weeks*	<ul style="list-style-type: none"> 0.1-5mg mAb production >95% purity Endotoxin ctrl upon request A minimum of 5 constructs required
Sino Transient Expression Services (mAb and other antibody-like constructs known to have comparable expression level)	4-10 weeks	<ul style="list-style-type: none"> 5mg-gram level 95% by SEC <1EU/mg guaranteed Conjugation service available upon request
Sino Customized Expression Services (heavily engineered mAb, Bi-specific, ScFv, and other modified antibody-like constructs)	6-8 weeks	<ul style="list-style-type: none"> Customized expression May require pilot expression Customized QC standard Affinity testing available (ELISA, BiaCore, and Octet)
Sino Corporate Expression Service Program	TBD	<ul style="list-style-type: none"> High volume corporate customers Customized Master Service Agreement All projects receive highest priority Corporate package tailored to specific demand May include both protein and antibody expression services

UNLOCK R&D TAX CREDIT SAVINGS OPPORTUNITIES

Life Sciences organizations are inherently innovative and are among the top candidates for claiming R&D tax credits. Upfront investments made to create new drugs, chemical compounds, or medical devices can generate substantial opportunities to recoup costs.

SPECIFIC EXAMPLES OF QUALIFIED RESEARCH ACTIVITIES

- Preclinical/Discovery research on new compounds
- Attempting to design and develop pharmaceutical products, drug delivery systems, medical devices
- Designing and testing new chemical or medical compounds, therapies, or biologics
- Developing or improving manufacturing processes or capabilities
- Engaging in Clinical development activities, including production of trial lots and testing manufacturing scale up capabilities
- Reformulating drugs or compounds to reduce side effects or improve efficiency

GTM HELPS COMPANIES CLAIM & DEFEND R&D TAX CREDIT

Global Tax Management (GTM) helps multinational corporations of all sizes address complex tax operations. We have an extensive roster of Life Sciences clients at all stages (Pre-IPO to Fortune 1000). Whether your company is looking to claim R&D tax credits for the first time, or you are already claiming R&D credits, GTM can help on both fronts.

Contact us to find out how to avoid paying unnecessary taxes, obtain tax refunds, manage operational costs, and enhance the economic value of company initiatives.

GTM Corporate Headquarters
656 E. Swedesford Road
Suite 200
Wayne, PA 19087
P: 844-GTM-4TAX

go.gtmtax.com/taxcredits

Serving Science Together

We're proud to partner with Life Sciences Pennsylvania to bring you more than 1.7 million laboratory and research products.

You'll find a full range of antibodies, reagents, and other life sciences materials, including exclusive Applied Biosystems™ and Invitrogen™ products. Plus, take advantage of cost savings, incentives, and value-added services available through the Fisher Scientific channel.

We're proud to be your exclusive partner for:

- | | |
|-------------------------------------------|---------------------------|
| ✓ Lab essentials, supplies, and equipment | ✓ R&D collaboration |
| ✓ Scientific instruments | ✓ Clinical trial support |
| ✓ Encompass Procurement Services | ✓ Production efficiencies |
| ✓ Supply chain optimization | ✓ Life sciences tools |

Visit fishersci.com/lspa to learn more.



**Your unified COVID-19 response hub,
both now and beyond the pandemic.**



Appian Workforce Safety is the only solution with a unified, automated, and flexible approach for safety to onsite work.

Learn more at appian.com



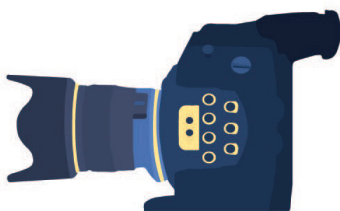


20/20 Visual Media is a video production company made up of passionate storytellers creating the most effective video messaging.

From the largest consumer brands to the smallest non-profits, the approach we take with each client is the same:

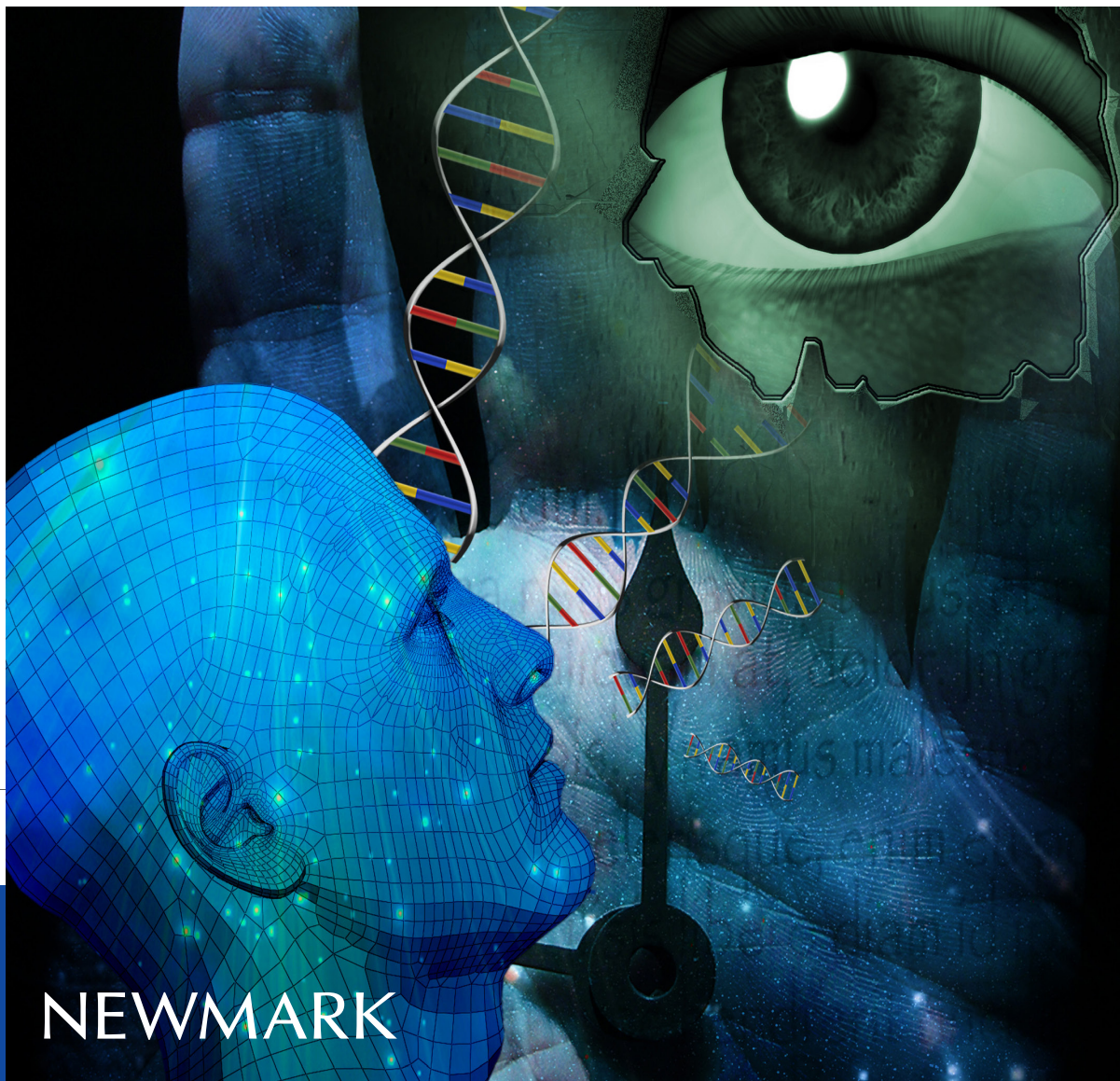
Guaranteed personal attention from a team dedicated to telling a story that is entirely your own.

To learn more about the value that video can add to your business, please visit: **2020visualmedia.com**



What will
YOUR
story be?





NEWMARK

Newmark is pleased to sponsor Life Sciences Pennsylvania

Life sciences has been a part of the Greater Philadelphia fabric for decades, but 2021 has revealed it to be a more vital part of the economy than ever before, and not just because of COVID-19: overall greater, sustained demand for improved healthcare solutions will continue to animate innovative companies that cluster together, benefiting not just global consumers of healthcare products, but Greater Philadelphia's economy and commercial real estate sector.

Expectations are that Greater Philadelphia will continue to both attract new-to-market tenants, and grow organically, playing an integral part in the region's stabilization and expansion post-COVID-19.

Contact Newmark for all of your life science commercial real estate needs:

Reid Blynn *Executive Managing Director* rblynn@ngkf.com t 610-755-6970

Jeff Mack *Executive Managing Director* jmack@ngkf.com t 610-755-6960

880 East Swedesford Road, Suite 100, Wayne, PA 19087 | t 610-265-0600

nmrk.com



When the human body is the biggest data platform, who will capture value?

In this Transformative Age, technology is helping reimagine industries in limitless ways.
ey.com/lifesciences #BetterQuestions

■ ■ ■

■ ■ ■

The better the question. The better the answer. The better the world works.

EY
Building a better working world

© 2019 EYGM Limited. All Rights Reserved. ED None.

Helping LSPA members take off

Wherever your innovation leads you, we're passionate about helping you get there and making all aspects of travel simpler and more efficient.

Book in minutes over the phone, via email or on our online booking platform, with instant access to all the best options and rates. Prefer to chat? Corporate Traveler offers live chat as well.

We're currently supporting these businesses and many more.



For more information on how we can help support your travel program, **contact us** today!

Making a difference.

We are proud to support the
**Workspace Conference -
The Next Normal.**

Wherever you fit into the
life sciences universe, we
understand the issues that
are unique to your business.

troutman.com

Troutman Pepper Hamilton Sanders LLP



troutman
pepper

**Leverage Skilled Resources – Enhance Financial Controls
Optimize Process Efficiencies**



BOOKMINDERS®

**Life Science companies need timely and accurate financial services.
Find out why auditors recommend Bookminders as an alternative
to in-house accounting.**

610-783-7300 www.bookminders.com

**Weekly accounting services for complex small businesses and nonprofits
Philadelphia – Pittsburgh – Baltimore**